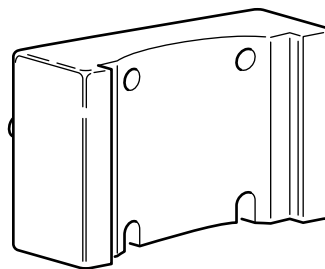
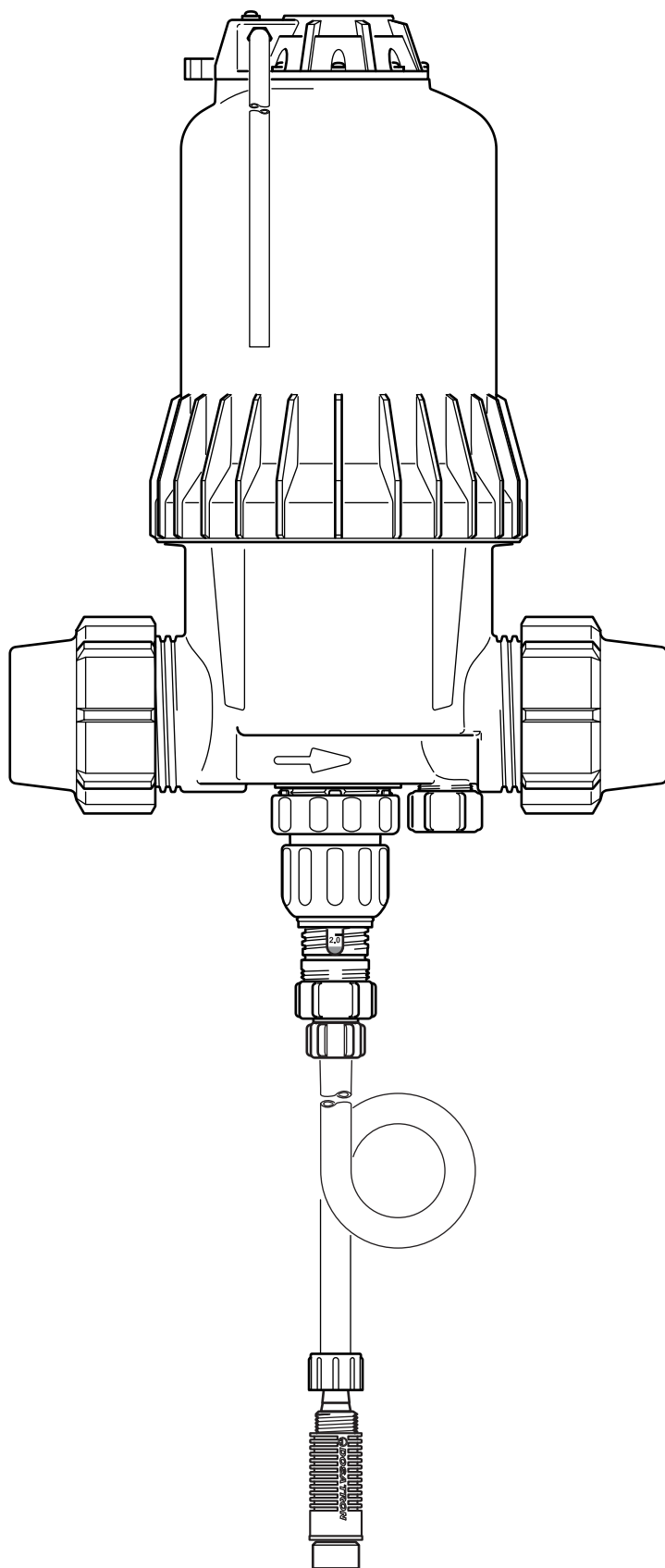


## D8R

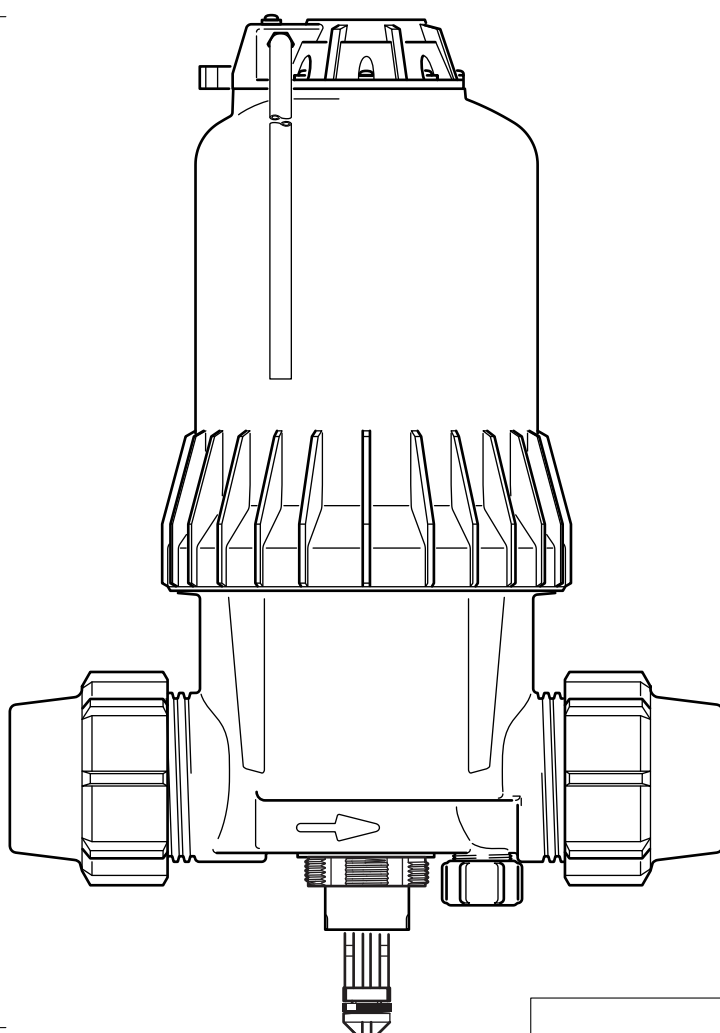
8 m<sup>3</sup>/h - 0.2 - 2%  
40 GPM - 1:500 - 1:50  
0.15 - 8 bar  
2.2 - 116 psi



**D8R**

**C+M**

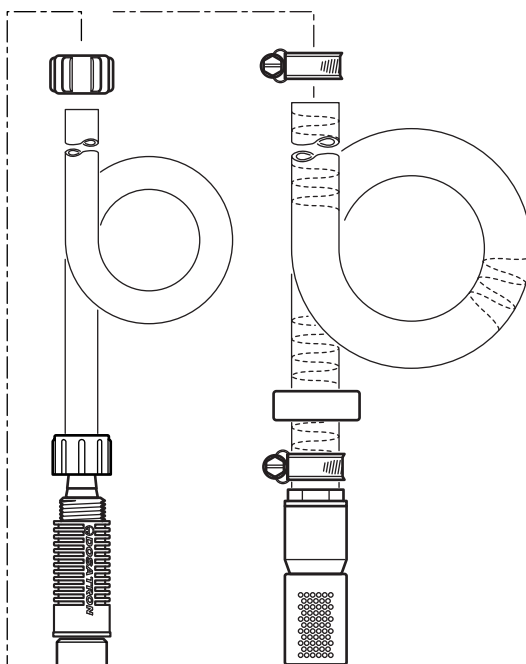
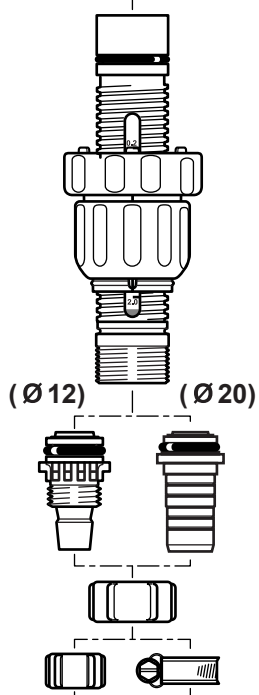
8 m<sup>3</sup>/h - 0.2 - 2%  
40 GPM - 1:500 - 1:50  
0.15 - 8 bar  
2.2 - 116 psi



**A**

**Option "V"**

**D**

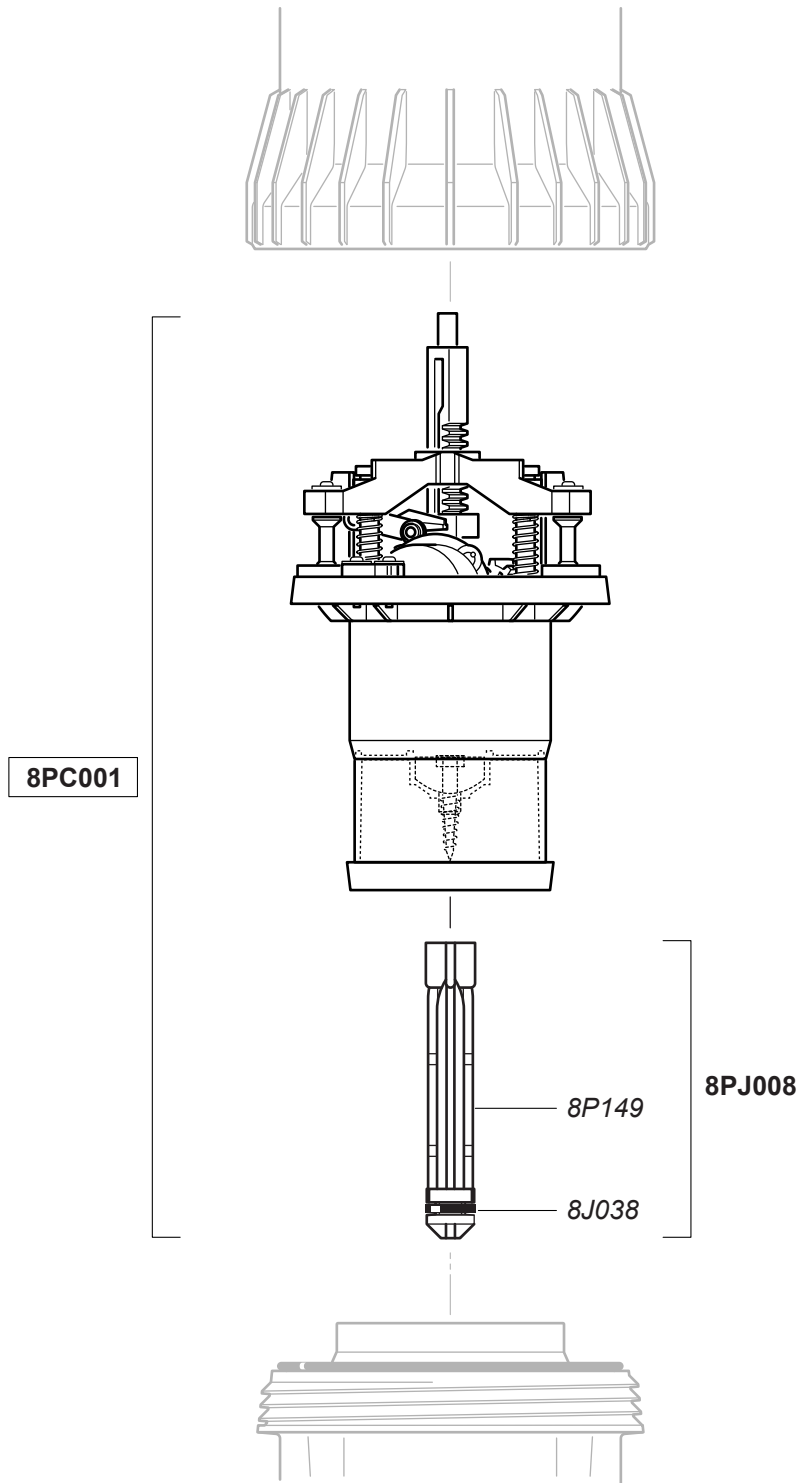


© DOSATRON INTERNATIONAL S.A.S. 2010  
D8R/1009/D3



# D8R

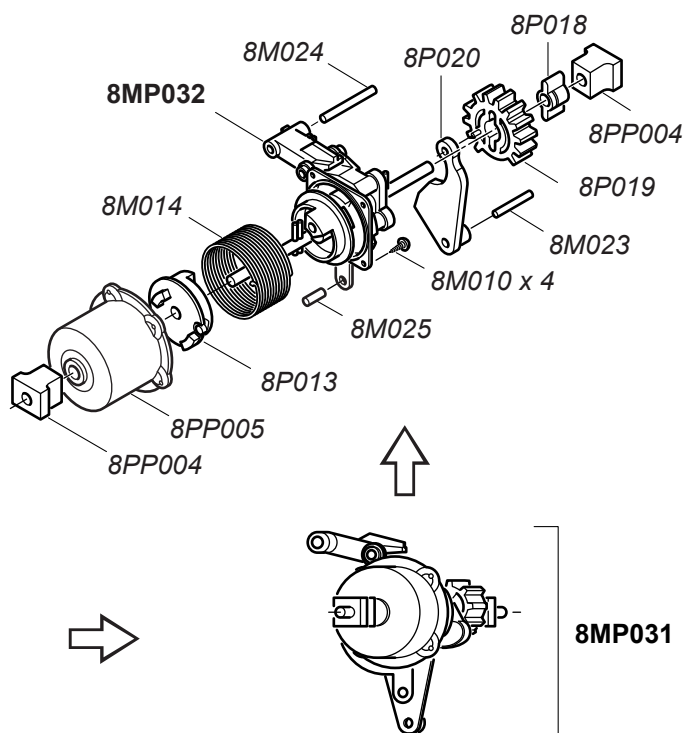
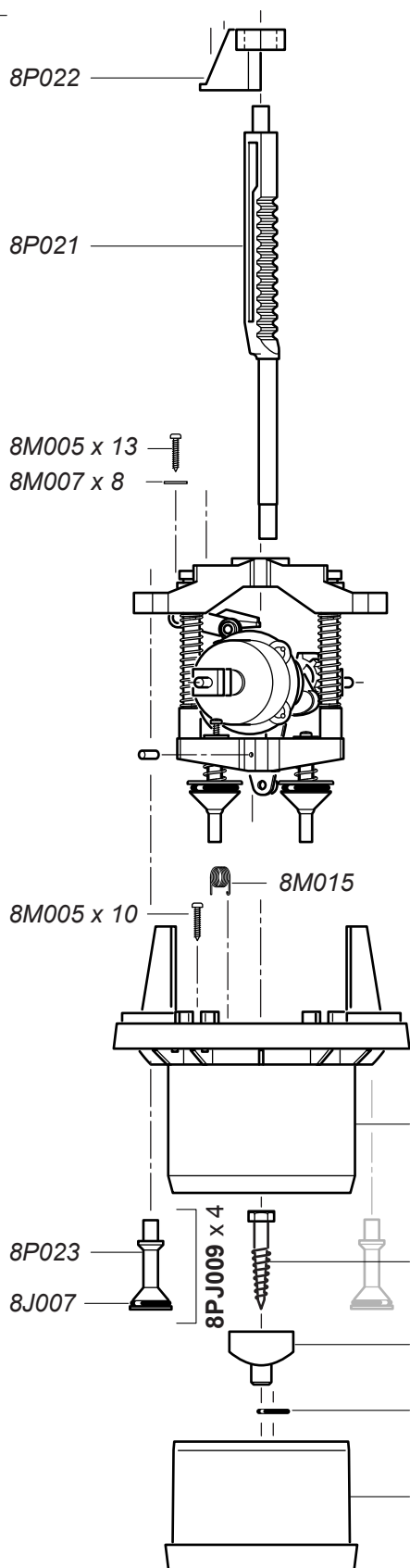
8 m<sup>3</sup>/h - 0.2 - 2%  
40 GPM - 1:500 - 1:50  
0.15 - 8 bar  
2.2 - 116 psi



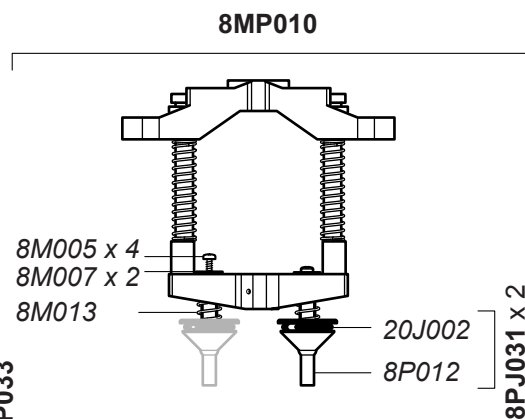
# D8R

8 m<sup>3</sup>/h - 0.2 - 2%  
 40 GPM - 1:500 - 1:50  
 0.15 - 8 bar  
 2.2 - 116 psi

8PC002

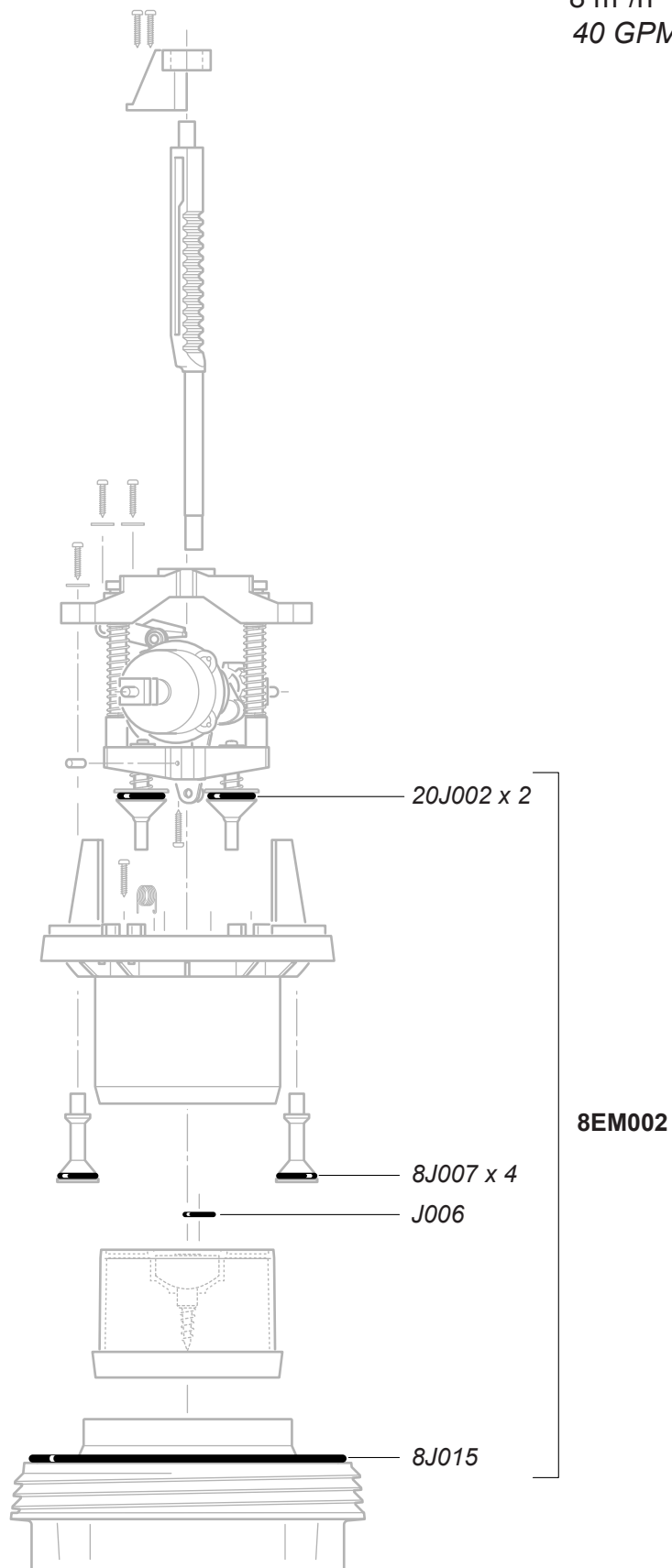


8MP033



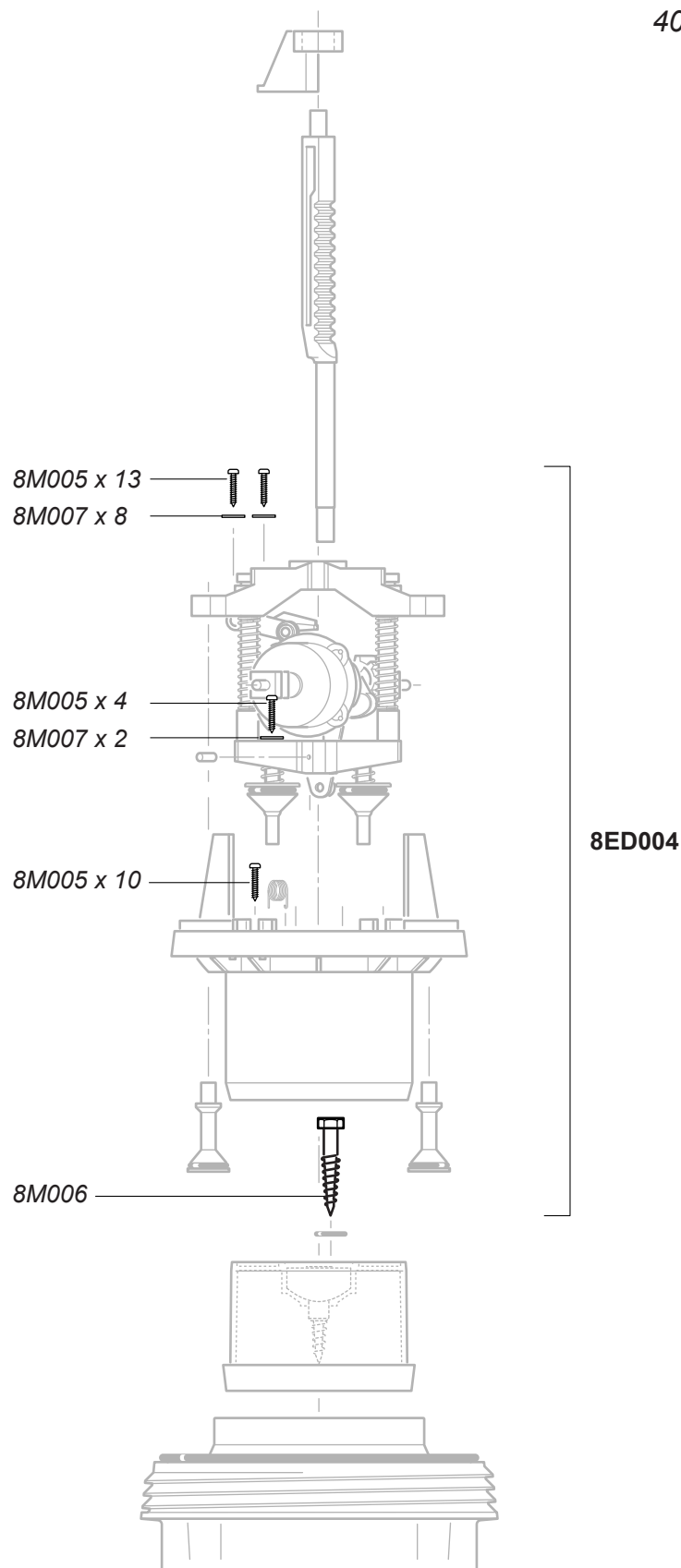
# D8R

8 m<sup>3</sup>/h - 0.2 - 2%  
 40 GPM - 1:500 - 1:50  
 0.15 - 8 bar  
 2.2 - 116 psi



# D8R

8 m<sup>3</sup>/h - 0.2 - 2%  
 40 GPM - 1:500 - 1:50  
 0.15 - 8 bar  
 2.2 - 116 psi



# D8R

8 m<sup>3</sup>/h - 0.2 - 2%  
 40 GPM - 1:500 - 1:50  
 0.15 - 8 bar  
 2.2 - 116 psi

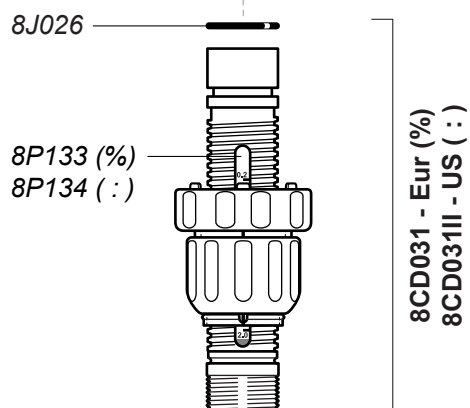
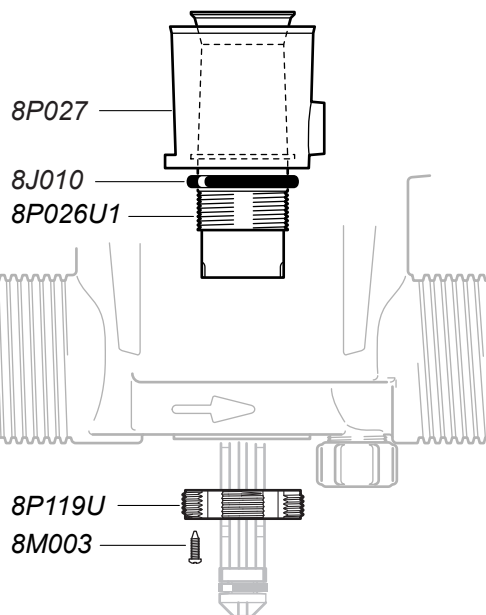
© DOSATRON INTERNATIONAL S.A.S. 2010  
 D8R/1009/D8

8CD023 (Ø12) Eur - 8CD023II (Ø12) US  
 8CD023V (Ø20) Eur

8CD032 (Ø12) Eur - 8CD032II (Ø12) US  
 8CD032V (Ø20) Eur

8PJ062

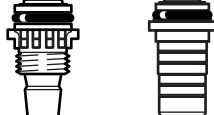
⚠ 3 only



PJDI006 (Ø12)  
 PJDI007 (Ø20)

(Ø12) (Ø20)

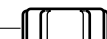
8PJ017



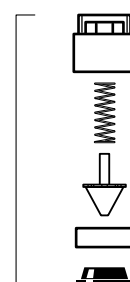
PJDI059

PDI056

PDI057



8PJ018



JDI013

20J002

PDI054

20J002

PDI055

20J002

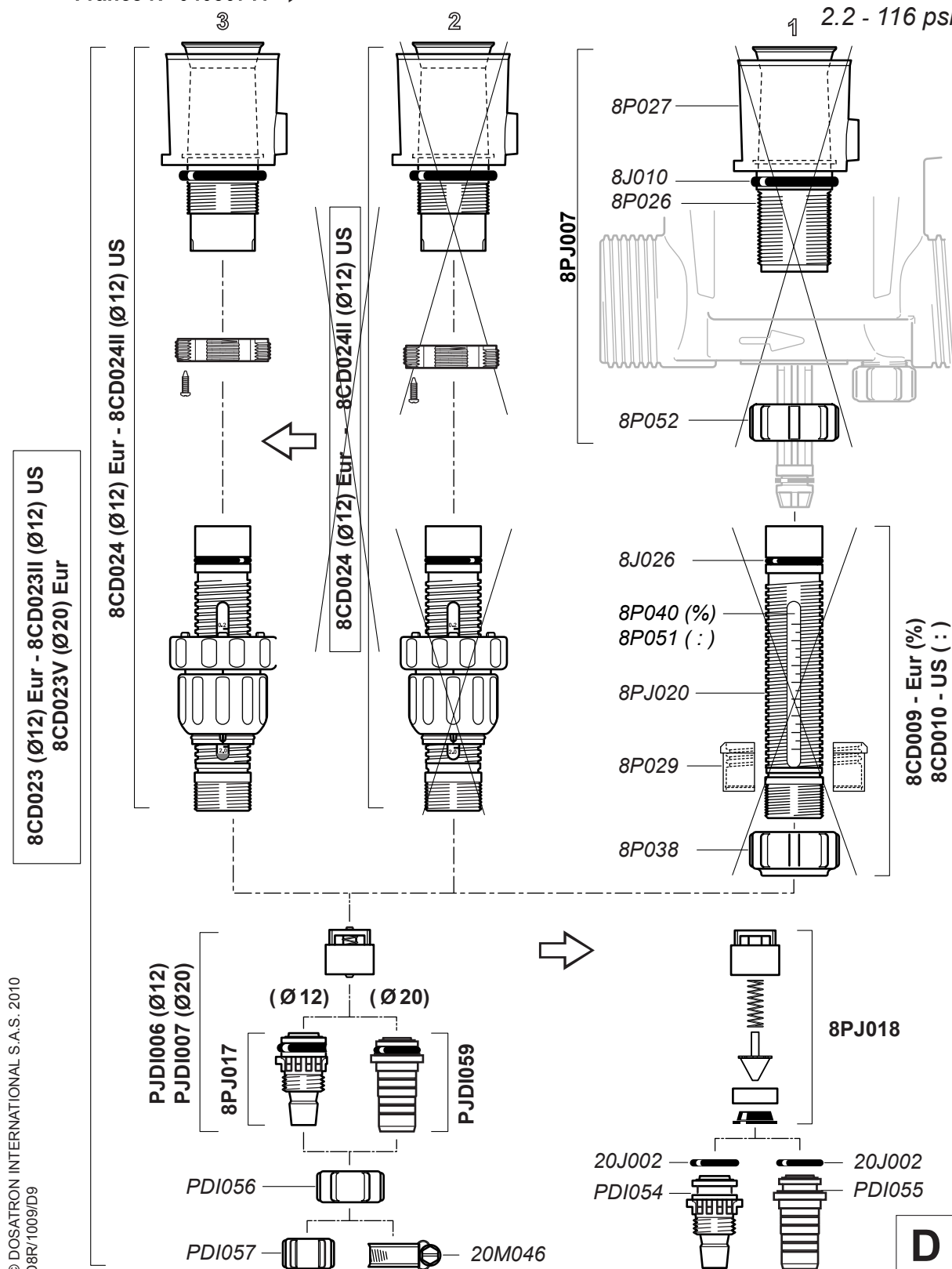
PDI055

D



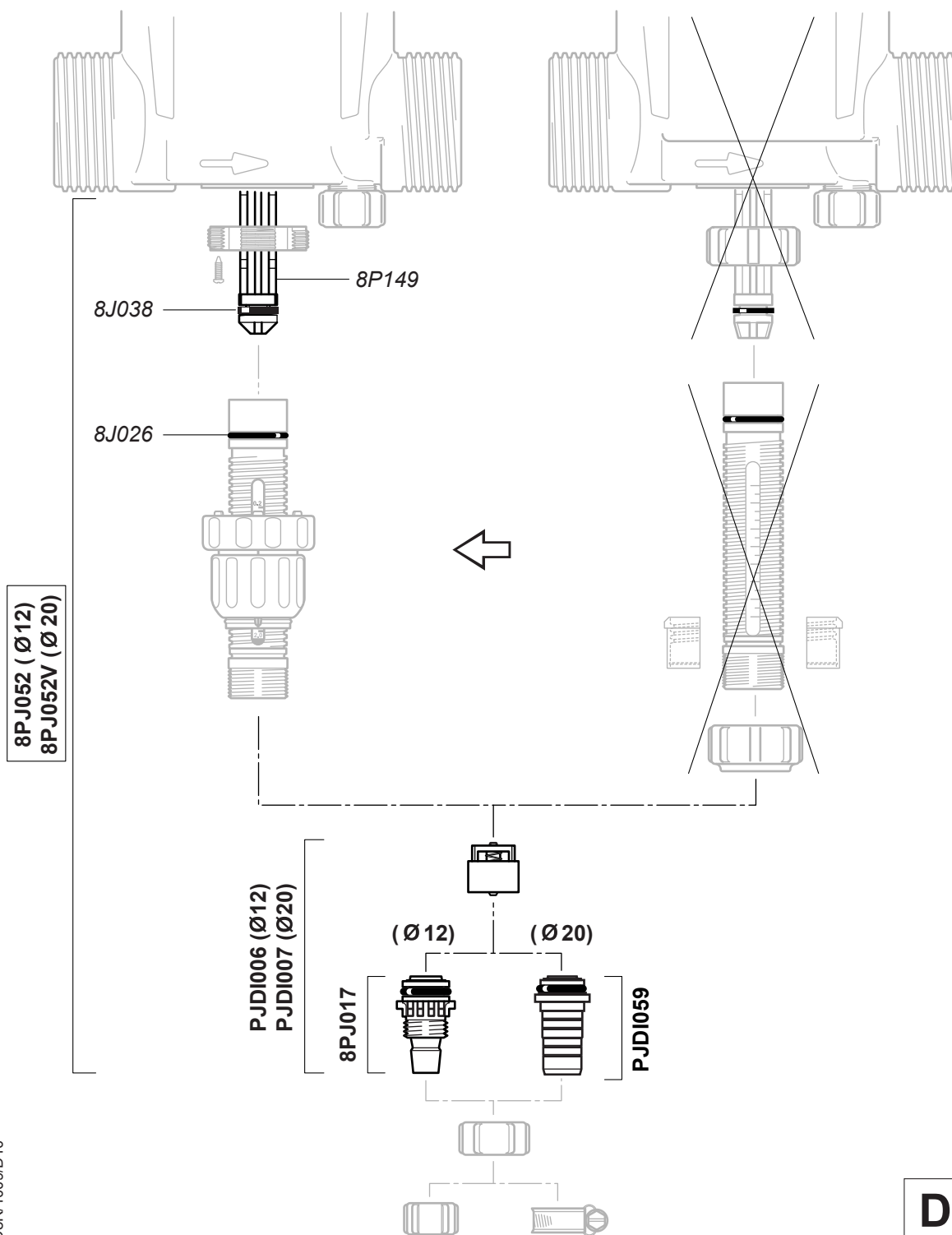
© DOSATRON INTERNATIONAL S.A.S. 2010  
D8R/1009/D9

8 m<sup>3</sup>/h - 0.2 - 2%  
40 GPM - 1:500 - 1:50  
0.15 - 8 bar  
2.2 - 116 psi



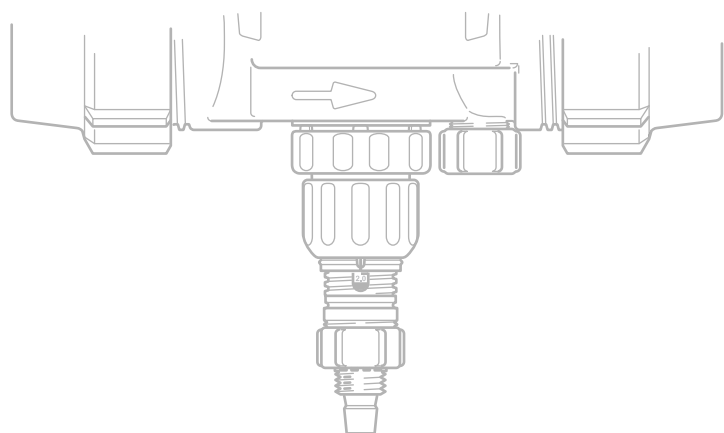
# D8R

8 m<sup>3</sup>/h - 0.2 - 2%  
 40 GPM - 1:500 - 1:50  
 0.15 - 8 bar  
 2.2 - 116 psi



# D8R

8 m<sup>3</sup>/h - 0.2 - 2%  
 40 GPM - 1:500 - 1:50  
 0.15 - 8 bar  
 2.2 - 116 psi



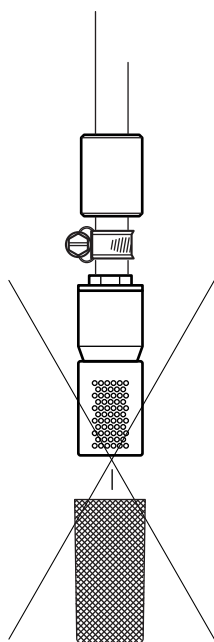
(Ø 12)

PDI057

8P045D

MP222

MPDI181



## Option "V"



(Ø 20)

20M046

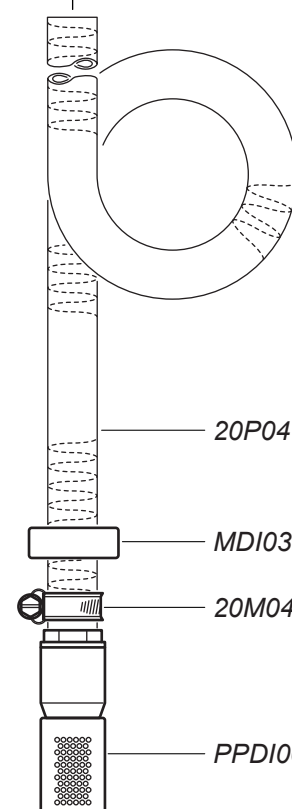
MPDI013

20P041

MDI036

20M046

PPDI002



A