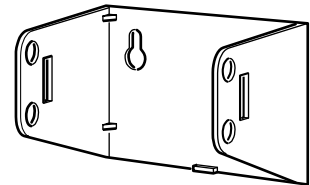
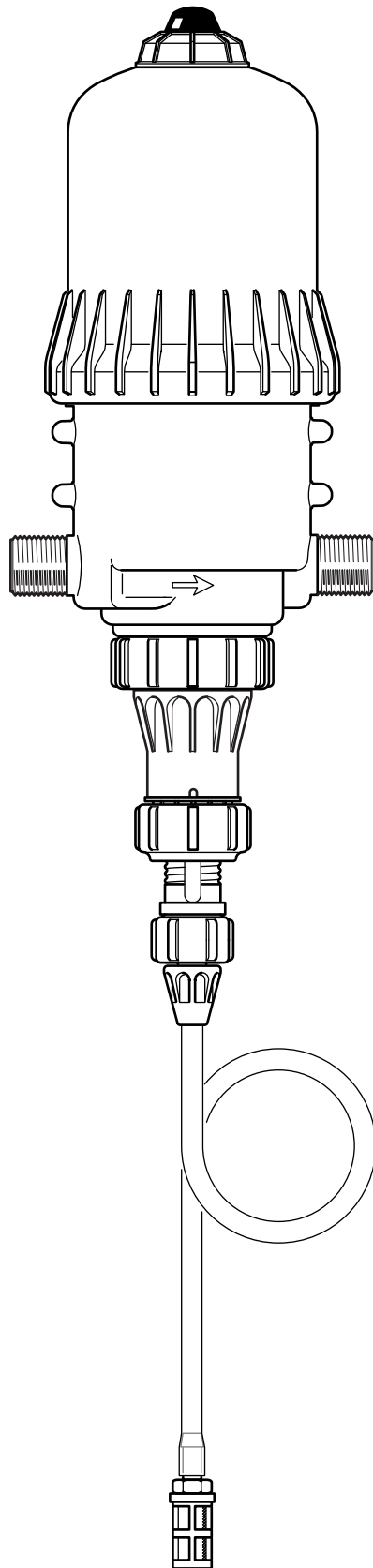


DI16

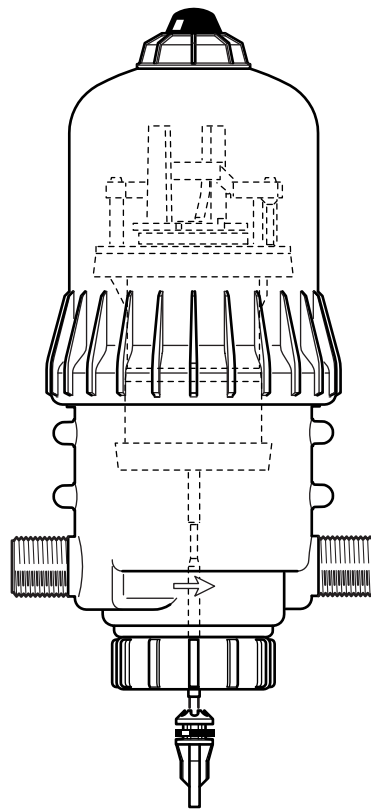
2.5 m³/h - 0.2 - 1.6%
11 GPM - 1:500 - 1:64
0.3 - 6 bar
4.3 - 85 psi



DI16

C+M

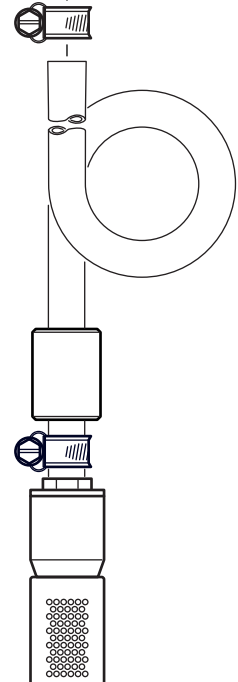
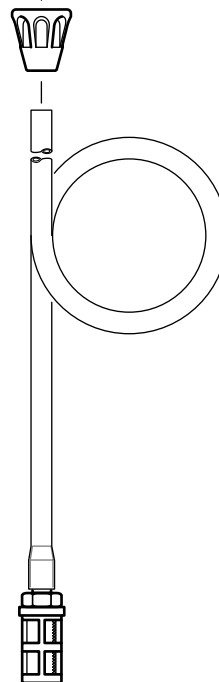
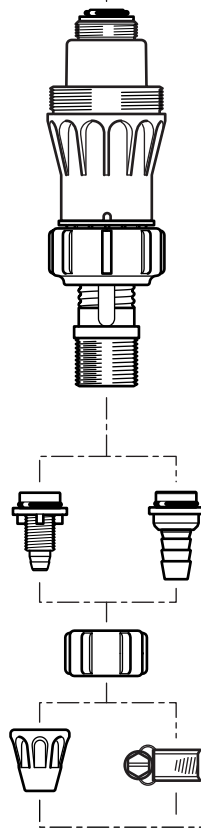
2.5 m³/h - 0.2 - 1.6%
11 GPM - 1:500 - 1:64
0.3 - 6 bar
4.3 - 85 psi



A

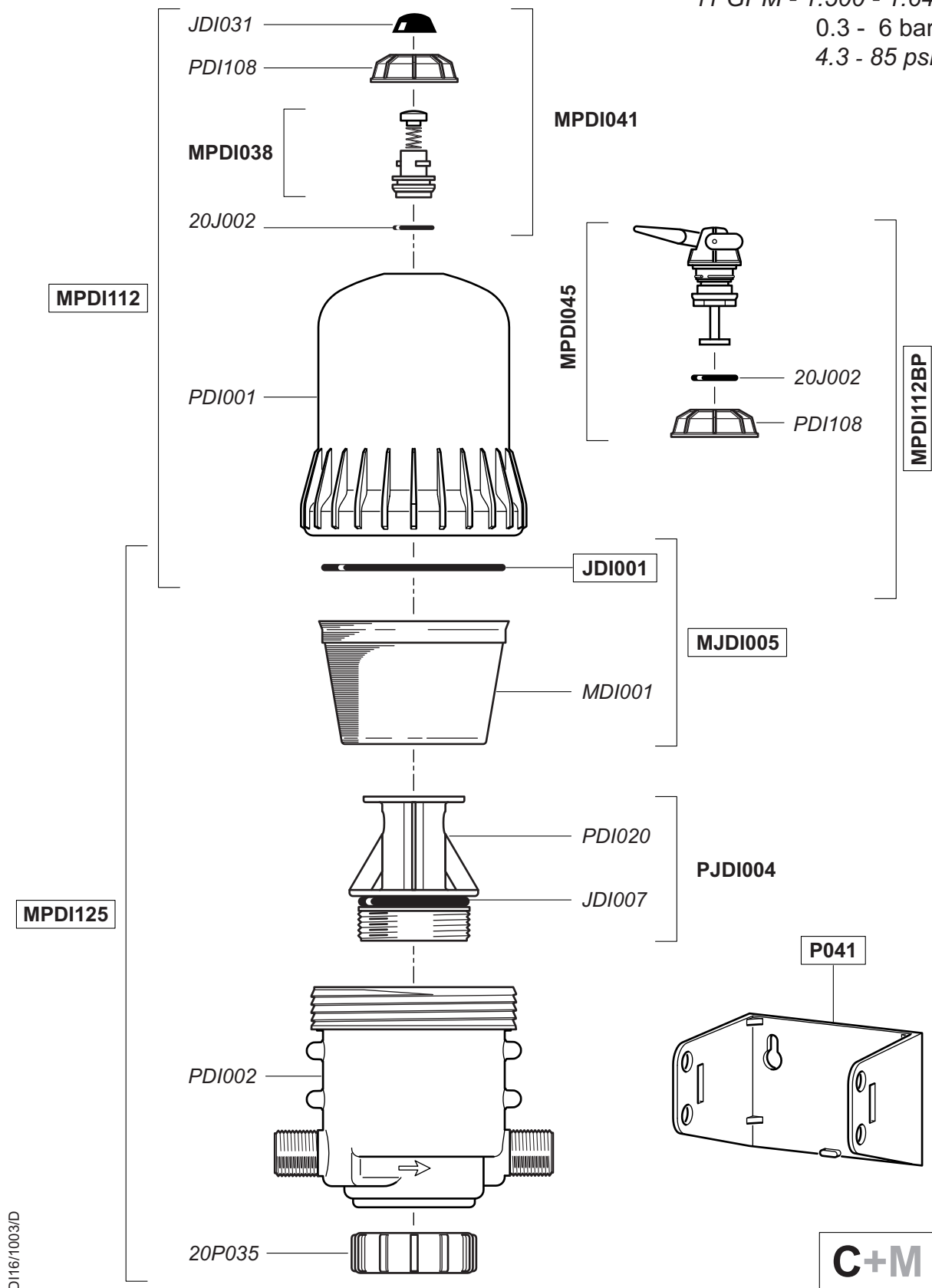
Option "V"

D



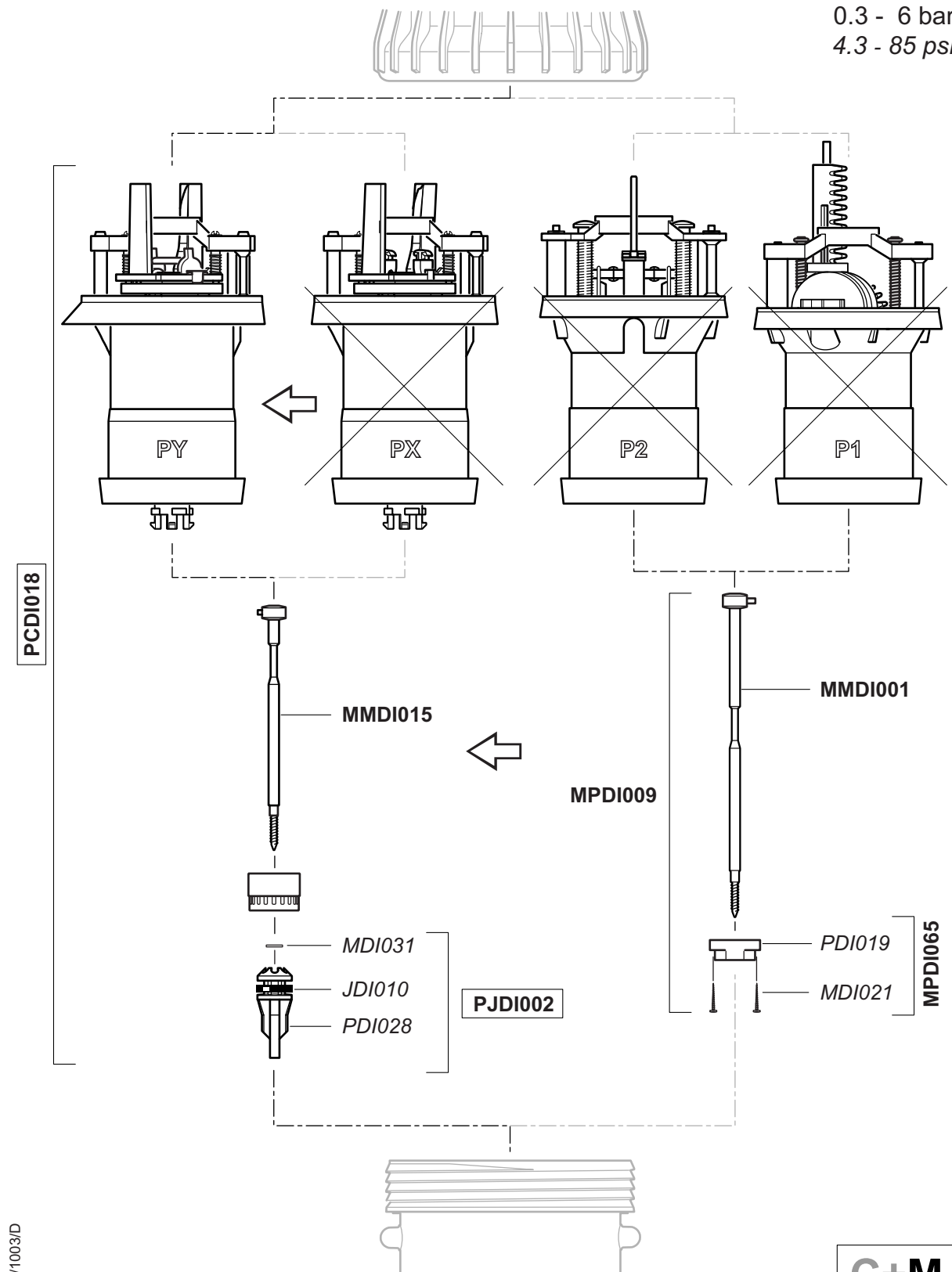
DI16

2.5 m³/h - 0.2 - 1.6%
 11 GPM - 1:500 - 1:64
 0.3 - 6 bar
 4.3 - 85 psi



DI16

2.5 m³/h - 0.2 - 1.6%
 11 GPM - 1:500 - 1:64
 0.3 - 6 bar
 4.3 - 85 psi



DI16

DI16/1003/D

PCDI021E

PCDI021

MPDI140

MPDI137

MDI092
PDI296
PDI304

PY

MDI286
MDI248
PDI005U
MDI285

PDI301

MDI215
PDI489

PDI306Y

JDI067

PDI305Y

MDI286 x 6

PDI007
8J002

PDI303

MPDI098Y

PJDI025

2.5 m³/h - 0.2 - 1.6%
11 GPM - 1:500 - 1:64
0.3 - 6 bar
4.3 - 85 psi

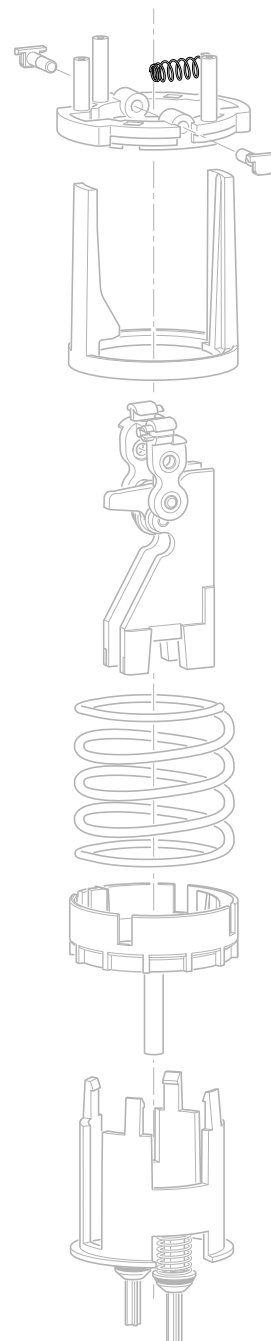
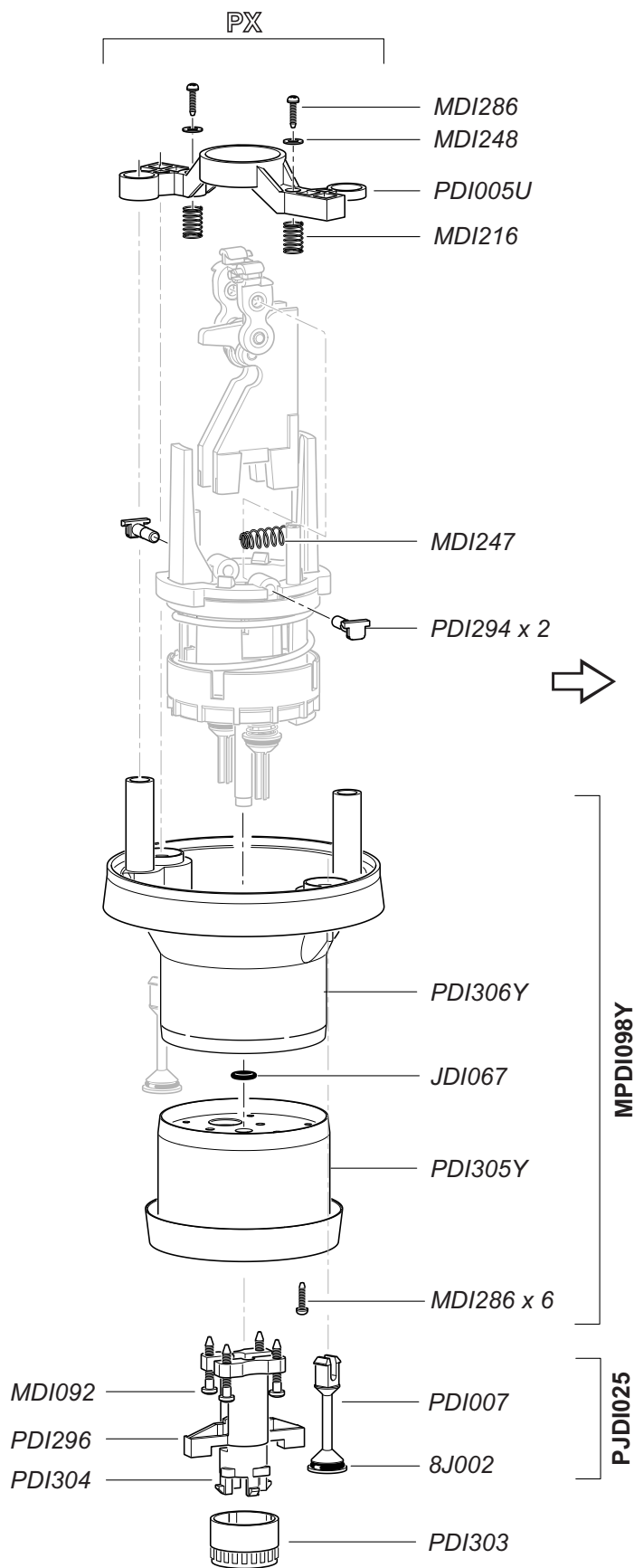


MPDI138

C+M

DI16

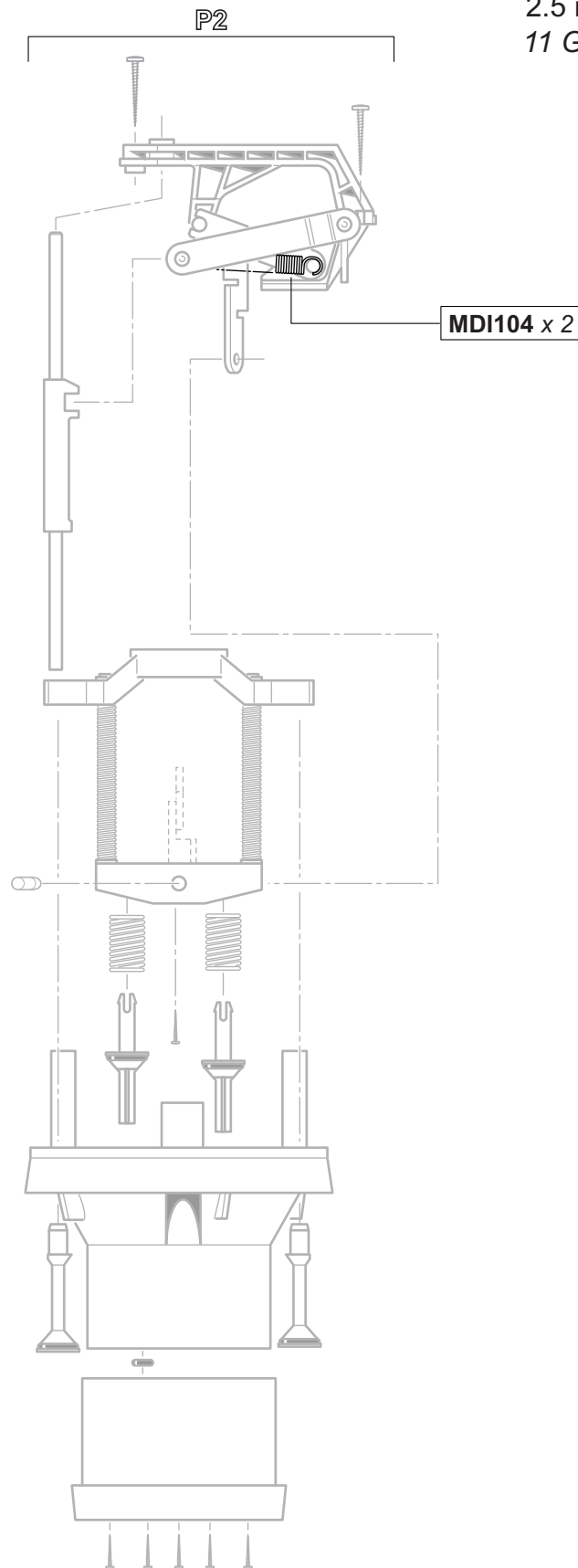
2.5 m³/h - 0.2 - 1.6%
 11 GPM - 1:500 - 1:64
 0.3 - 6 bar
 4.3 - 85 psi



C+M

DI16

2.5 m³/h - 0.2 - 1.6%
11 GPM - 1:500 - 1:64
0.3 - 6 bar
4.3 - 85 psi



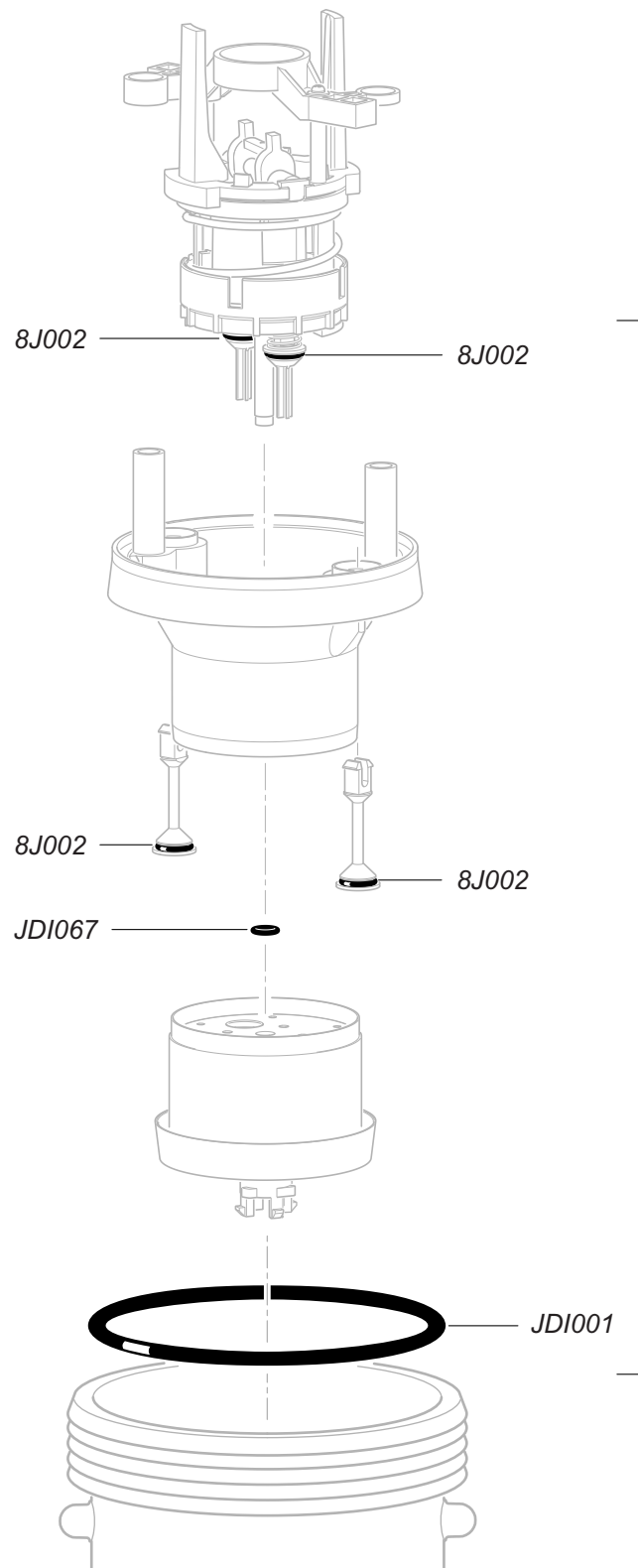
DI16/1003/D

C+M

DI16

PX + PY

2.5 m³/h - 0.2 - 1.6%
11 GPM - 1:500 - 1:64
0.3 - 6 bar
4.3 - 85 psi

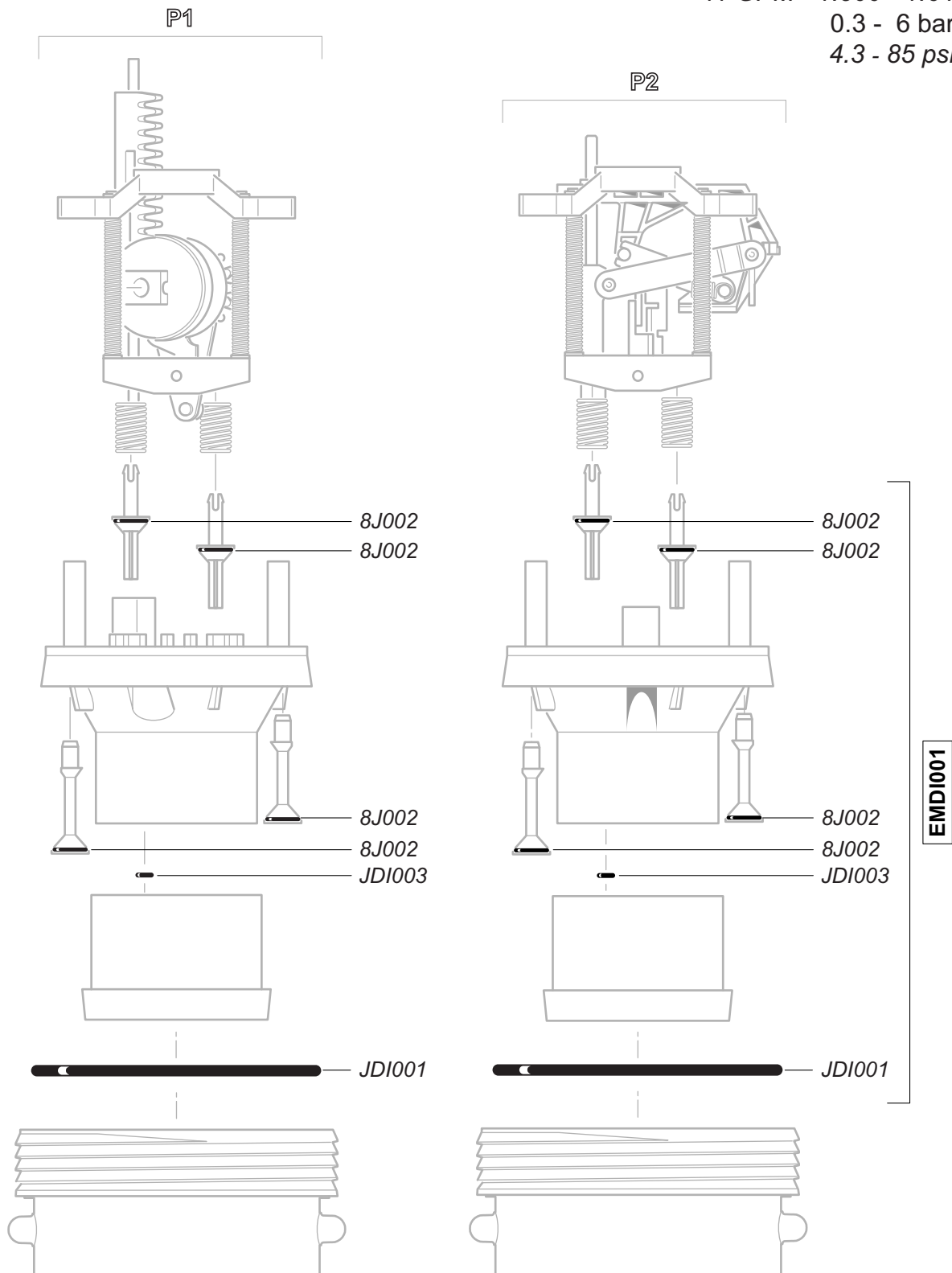


EMDI003

C+M

DI16

2.5 m³/h - 0.2 - 1.6%
 11 GPM - 1:500 - 1:64
 0.3 - 6 bar
 4.3 - 85 psi



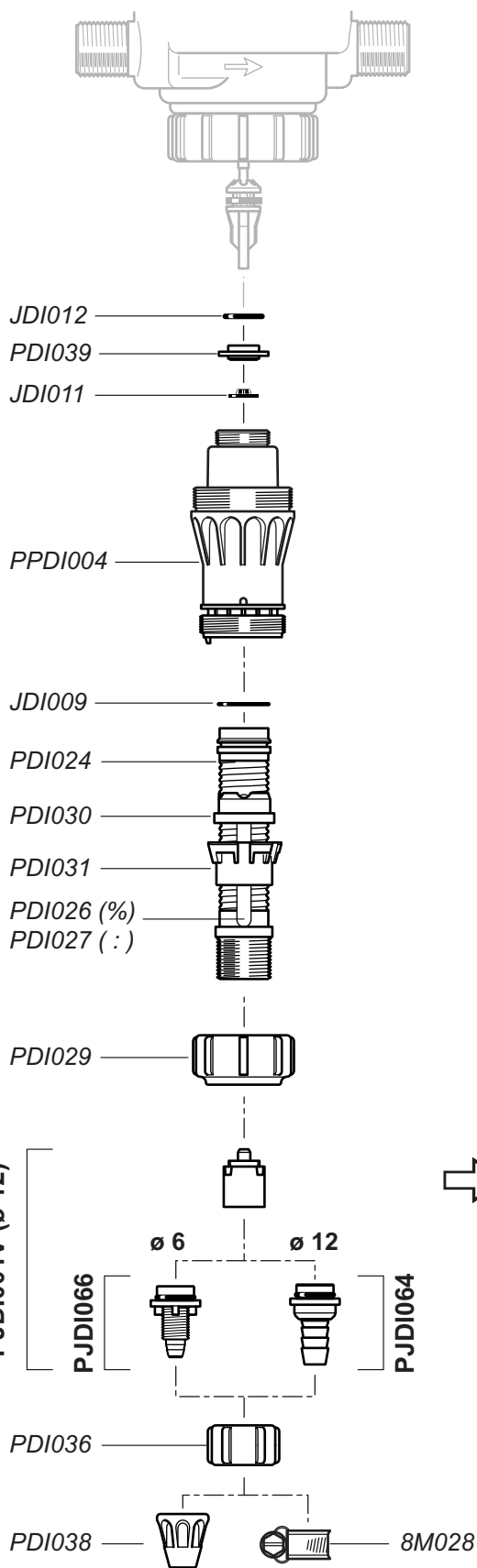
DI16

2.5 m³/h - 0.2 - 1.6%
 11 GPM - 1:500 - 1:64
 0.3 - 6 bar
 4.3 - 85 psi

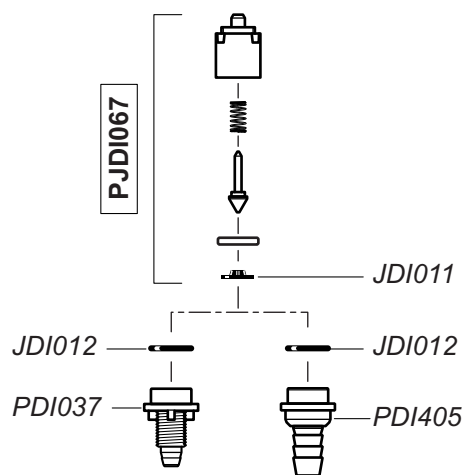
DI16/1003/D

CDDI053 (ø 6)
 CDDI053V (ø 12)

PJDI001 (ø 6)
 PJDI001V (ø 12)



PJDI067



D

DI16

2.5 m³/h - 0.2 - 1.6%
11 GPM - 1:500 - 1:64
0.3 - 6 bar
4.3 - 85 psi

PJDI075 (ø 6)
PJDI075V (ø 12)

PJDI001 (ø 6)
PJDI001V (ø 12)

PJDI067

PJDI066

PJDI064

JDI010

JDI012

JDI011

JDI009

ø 6

ø 12

DI16

2.5 m³/h - 0.2 - 1.6%
 11 GPM - 1:500 - 1:64
 0.3 - 6 bar
 4.3 - 85 psi

